

## MindView Online Speech Technical Specification

**File:** MindView Online Speech Technical Specification.docx

Document Revision: 1.00

**MatchWare Inc.**  
511 West Bay Street  
Suite 480  
Tampa, FL 33606  
United States  
  
T: +1-813-254-6644  
usa@matchware.com

**MatchWare Ltd**  
3-5 Red Lion Street  
Richmond, TW9 1RJ, UK  
United Kingdom  
  
T: +44 (0)20 8940 9700  
london@matchware.com

**MatchWare France**  
38 rue Servan  
75544 Paris Cedex 11  
France  
  
T: +33 (0)810 000 172  
vente@matchware.com

**MatchWare GmbH**  
Anckelmannsplatz 1  
20537 Hamburg  
Deutschland  
  
T: +49 (0) 40 543764  
hamburg@matchware.com

**MatchWare A/S**  
Thomas Koppels Gade 30  
DK-8000, Aarhus C  
Denmark  
  
T: +45 86 20 88 20  
aarhus@matchware.com

## Contents

Contents .....	2
Introduction.....	3
Technology .....	3
Infrastructure.....	3
Enable/Disable Online Speech.....	4

**MatchWare Inc.**  
511 West Bay Street  
Suite 480  
Tampa, FL 33606  
United States  
  
T: +1-813-254-6644  
usa@matchware.com

**MatchWare Ltd**  
3-5 Red Lion Street  
Richmond, TW9 1RJ, UK  
United Kingdom  
  
T: +44 (0)20 8940 9700  
london@matchware.com

**MatchWare France**  
38 rue Servan  
75544 Paris Cedex 11  
France  
  
T: +33 (0)810 000 172  
vente@matchware.com

**MatchWare GmbH**  
Anckelmannsplatz 1  
20537 Hamburg  
Deutschland  
  
T: +49 (0) 40 543764  
hamburg@matchware.com

**MatchWare A/S**  
Thomas Koppels Gade 30  
DK-8000, Aarhus C  
Denmark  
  
T: +45 86 20 88 20  
aarhus@matchware.com

## Introduction

This document provides a technical overview of the MindView Online Speech feature which includes Text to Speech (Read Aloud) and Speech to Text (Dictation).

The online speech feature is available in the **MindView AT Windows** edition only.

## Technology

MindView uses Microsoft Azure AI Speech for advanced speech recognition. This cloud-based service provides accurate, real-time transcription and voice interaction using deep learning models, supporting multiple languages and adapting to different acoustic environments. MindView enhances accessibility and productivity by enabling efficient dictation and reading aloud of content.

## Infrastructure

MatchWare uses Microsoft Azure which is a cloud computing platform and infrastructure created and managed by Microsoft. The following diagrams show the infrastructure and routing architecture.

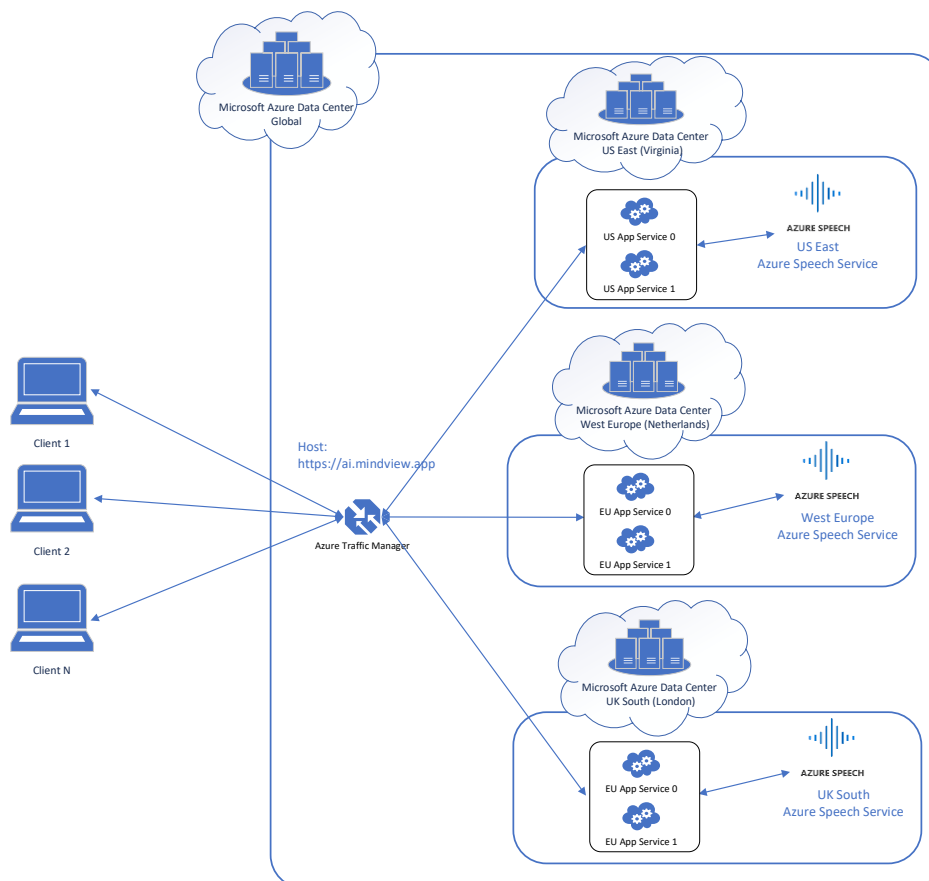


Figure 1 - Overview of the infrastructure and the routing architecture.

**MatchWare Inc.**  
511 West Bay Street  
Suite 480  
Tampa, FL 33606  
United States  
  
T: +1-813-254-6644  
usa@matchware.com

**MatchWare Ltd**  
3-5 Red Lion Street  
Richmond, TW9 1RJ, UK  
United Kingdom  
  
T: +44 (0)20 8940 9700  
london@matchware.com

**MatchWare France**  
38 rue Servan  
75544 Paris Cedex 11  
France  
  
T: +33 (0)810 000 172  
vente@matchware.com

**MatchWare GmbH**  
Anckelmannsplatz 1  
20537 Hamburg  
Deutschland  
  
T: +49 (0) 40 543764  
hamburg@matchware.com

**MatchWare A/S**  
Thomas Koppels Gade 30  
DK-8000, Aarhus C  
Denmark  
  
T: +45 86 20 88 20  
aarhus@matchware.com

The MindView client uses Microsoft Azure Traffic Manager to connect to the nearest web service, reducing latency. All connections are encrypted end-to-end.

The web service requests the Speech service according to the specified user data location, ensuring that speech data from MindView to Azure Speech Service remains within the designated region.

MatchWare's Online Speech service is currently hosted at the following Microsoft Azure data centers:

- East US (Virginia)
- West Europe (Netherlands)
- UK South (London)

The following sequence diagram outlines the detailed procedure when MindView interacts with the online speech service. Once MindView has authorized access to the speech service and obtained Speech service based on the specified user data location, all information transmitted from MindView to the speech service will be retained within this designated region (marked with green).

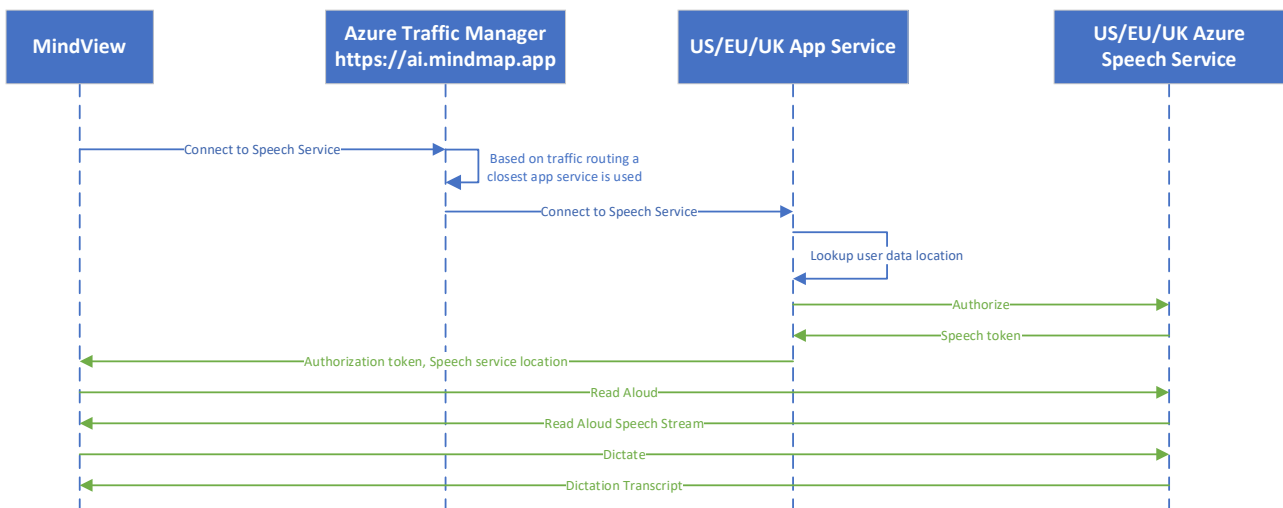


Figure 2 - Sequence diagram of the data flow.

## Enable/Disable Online Speech

The Online Speech Service is available by default for all MindView AT Windows users.

The Online Speech service can optionally be disabled either by the user or by installer settings.

Disabling the Online Speech functionality will cause MindView to revert to using the native Windows Speech API, which offers limited capabilities.

### Disable by user

It is possible to disable the Online Speech within the MindView Options.

Go to MindView Options -> Preferences and you will find the following 2 options:

**MatchWare Inc.**  
511 West Bay Street  
Suite 480  
Tampa, FL 33606  
United States  
  
T: +1-813-254-6644  
usa@matchware.com

**MatchWare Ltd**  
3-5 Red Lion Street  
Richmond, TW9 1RJ, UK  
United Kingdom  
  
T: +44 (0)20 8940 9700  
london@matchware.com

**MatchWare France**  
38 rue Servan  
75544 Paris Cedex 11  
France  
  
T: +33 (0)810 000 172  
vente@matchware.com

**MatchWare GmbH**  
Anckelmannsplatz 1  
20537 Hamburg  
Deutschland  
  
T: +49 (0) 40 543764  
hamburg@matchware.com

**MatchWare A/S**  
Thomas Koppels Gade 30  
DK-8000, Aarhus C  
Denmark  
  
T: +45 86 20 88 20  
aarhus@matchware.com

- *Use Online Text to Speech Engine*
- *Use Online Speech to Text Engine*

### ***Disable by Admin***

The Online Speech can be disabled during the installation process by using Windows Installer properties.

Please refer to the MindView Windows Technical Specification for details about the properties to be used:

[MindView Windows Technical Specification](#)

**MatchWare Inc.**  
511 West Bay Street  
Suite 480  
Tampa, FL 33606  
United States  
  
T: +1-813-254-6644  
usa@matchware.com

**MatchWare Ltd**  
3-5 Red Lion Street  
Richmond, TW9 1RJ, UK  
United Kingdom  
  
T: +44 (0)20 8940 9700  
london@matchware.com

**MatchWare France**  
38 rue Servan  
75544 Paris Cedex 11  
France  
  
T: +33 (0)810 000 172  
vente@matchware.com

**MatchWare GmbH**  
Anckelmannsplatz 1  
20537 Hamburg  
Deutschland  
  
T: +49 (0) 40 543764  
hamburg@matchware.com

**MatchWare A/S**  
Thomas Koppels Gade 30  
DK-8000, Aarhus C  
Denmark  
  
T: +45 86 20 88 20  
aarhus@matchware.com