

MATCHWARE

Software for Creative Minds

MatchWare MindView Microsoft SharePoint Integration



MatchWare Inc.
605 W. Azeele Street
Tampa, FL 33606-2205
USA

T: 1-800-880-2810
F: 1-800-880-2910
usa@matchware.com

MatchWare Ltd
9-11 The Quadrant
Richmond, TW9 1BP
United Kingdom

T: +44 (0)20 8940 9700
F: +44 (0)20 8332 2170
london@matchware.com

MatchWare Germany
Telemannstr. 21
20255 Hamburg
Deutschland

T: +49 (0) 40 543764
F: +49 (0) 40 543789
hamburg@matchware.com

MatchWare A/S
P. Hior-Lorenzens vej 2A
Århus C
Denmark

T: +45 87 303500
F: +45 87 303501
aarhus@matchware.com

MATCHWARE

Software for Creative Minds

File: MindView SharePoint Integration.docx

Document Revision: 1.3

Table of Contents

| | |
|--|---|
| Overview..... | 3 |
| System Requirements..... | 3 |
| Setting up the connection | 3 |
| Multiple Accounts..... | 5 |
| Opening a MindView file from SharePoint..... | 5 |
| Saving a MindView document to Microsoft SharePoint site..... | 6 |
| Tips and tricks..... | 7 |

MatchWare Inc.
605 W. Azeele Street
Tampa, FL 33606-2205
USA

T: 1-800-880-2810
F: 1-800-880-2910
usa@matchware.com

MatchWare Ltd
9-11 The Quadrant
Richmond, TW9 1BP
United Kingdom

T: +44 (0)20 8940 9700
F: +44 (0)20 8332 2170
london@matchware.com

MatchWare Germany
Telemannstr. 21
20255 Hamburg
Deutschland

T: +49 (0) 40 543764
F: +49 (0) 40 543789
hamburg@matchware.com

MatchWare A/S
P. Hior-Lorenzens vej 2A
Århus C
Denmark

T: +45 87 303500
F: +45 87 303501
aarhus@matchware.com

MATCHWARE

Software for Creative Minds

Overview

This document provides a description of how to setup a connection to a Microsoft SharePoint site from MindView. MindView will use the connection to browse through files, open and edit MindView Documents located at a SharePoint site.

System Requirements

Microsoft SharePoint version 2003, 2007, 2010, 2012, Office 365

Setting up the connection

To set up a connection to a SharePoint site of your choice do the following:

1. Click the "FILE" menu
2. Click "Open"
3. Click the pre-made "Microsoft SharePoint" account
4. Fill in the details of the SharePoint site.
5. Hit Connect to browse the SharePoint site.

MatchWare Inc.
605 W. Azelee Street
Tampa, FL 33606-2205
USA

T: 1-800-880-2810
F: 1-800-880-2910
usa@matchware.com

MatchWare Ltd
9-11 The Quadrant
Richmond, TW9 1BP
United Kingdom

T: +44 (0)20 8940 9700
F: +44 (0)20 8332 2170
london@matchware.com

MatchWare Germany
Telemannstr. 21
20255 Hamburg
Deutschland

T: +49 (0) 40 543764
F: +49 (0) 40 543789
hamburg@matchware.com

MatchWare A/S
P. Hior-Lorenzens vej 2A
Århus C
Denmark

T: +45 87 303500
F: +45 87 303501
aarhus@matchware.com

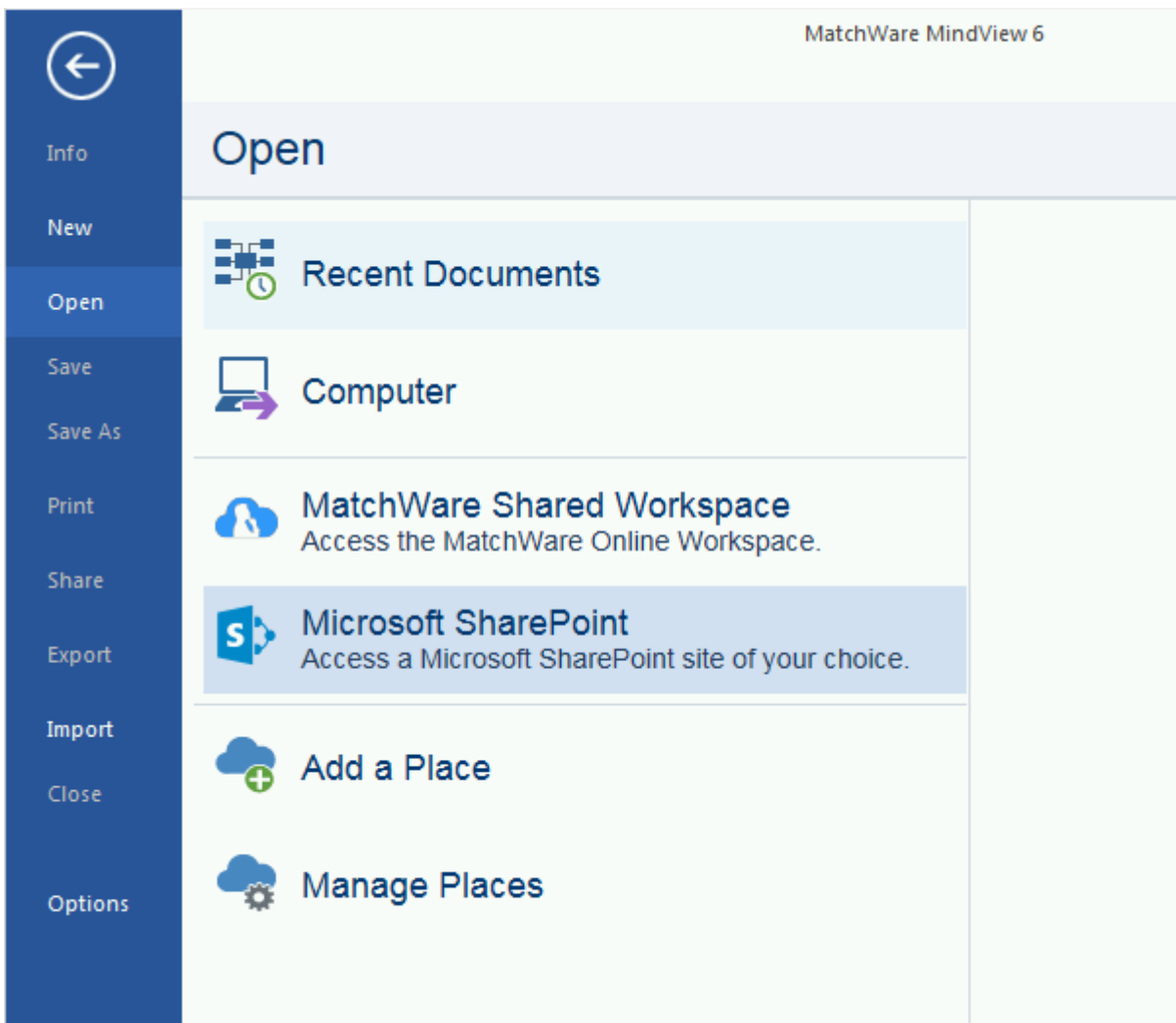


Figure 1 - Click "Microsoft SharePoint" account to setup a SharePoint site of your choice.

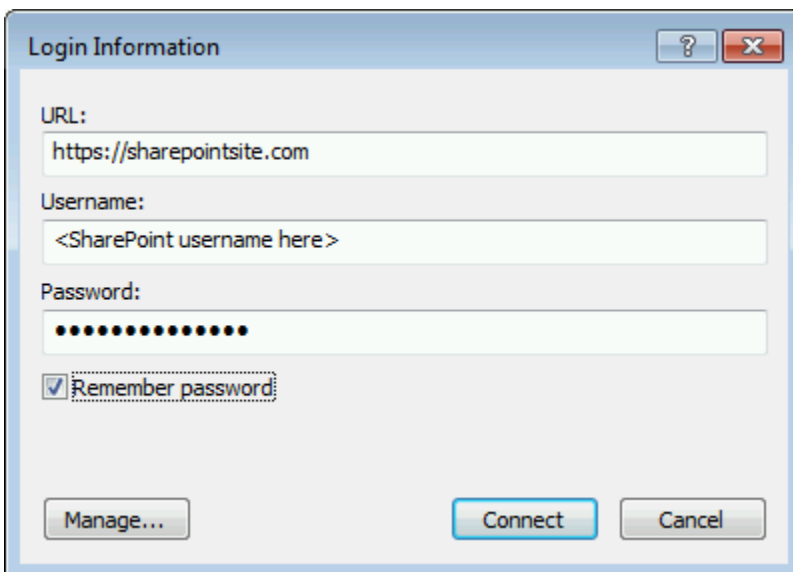


Figure 2 - Type in the URL, Username and Password to your Microsoft SharePoint site.

MatchWare Inc.
605 W. Azeele Street
Tampa, FL 33606-2205
USA

T: 1-800-880-2810
F: 1-800-880-2910
usa@matchware.com

MatchWare Ltd
9-11 The Quadrant
Richmond, TW9 1BP
United Kingdom

T: +44 (0)20 8940 9700
F: +44 (0)20 8332 2170
london@matchware.com

MatchWare Germany
Telemannstr. 21
20255 Hamburg
Deutschland

T: +49 (0) 40 543764
F: +49 (0) 40 543789
hamburg@matchware.com

MatchWare A/S
P. Hior-Lorenzens vej 2A
Århus C
Denmark

T: +45 87 303500
F: +45 87 303501
aarhus@matchware.com

Multiple Accounts

It is possible to setup connections to multiple SharePoint sites by using the "Add a Place" (see Figure 1). You will see a Dialog where the Microsoft SharePoint details needs to be entered (see Figure 3).

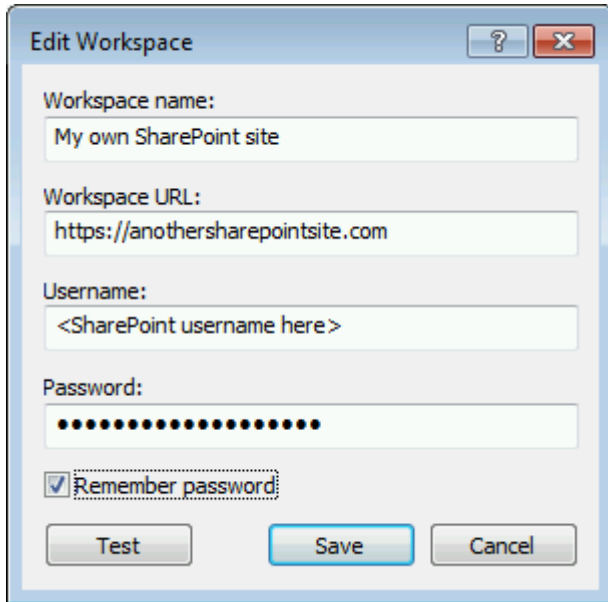


Figure 1 - Fill in the empty fields with correct data

- **Workspace name:** Name of the connection which will be shown in the "Open" and "Save" list.
- **Workspace URL:** URL of either a local installation of the MatchWare Workspace or the Microsoft SharePoint site.
- **Username:** Username to the workspace
- **Password:** Password to the workspace
- **Test:** Use this button to test the connection to the Workspace.
- **NB:** If a secure site (https) is used for the workspace please make sure that there is a valid certificate for the site!

Remember password: Check if MindView should save the password and the user is logged in automatically without prompting the login screen.

When the "Test" returns "Login succeeded" you can hit OK to save and the connection is ready to use.



Figure 3 - Testing the workspace returns "Login Succeeded." when setup is correct.

Opening a MindView file from SharePoint

Select the newly setup Microsoft SharePoint connection from the Open list and you should now be able to browse the SharePoint site and navigate to the right folder to open MindView documents directly from your own SharePoint site.

MatchWare Inc.
605 W. Azeele Street
Tampa, FL 33606-2205
USA

T: 1-800-880-2810
F: 1-800-880-2910
usa@matchware.com

MatchWare Ltd
9-11 The Quadrant
Richmond, TW9 1BP
United Kingdom

T: +44 (0)20 8940 9700
F: +44 (0)20 8332 2170
london@matchware.com

MatchWare Germany
Telemannstr. 21
20255 Hamburg
Deutschland

T: +49 (0) 40 543764
F: +49 (0) 40 543789
hamburg@matchware.com

MatchWare A/S
P. Hior-Lorenzens vej 2A
Århus C
Denmark

T: +45 87 303500
F: +45 87 303501
aarhus@matchware.com

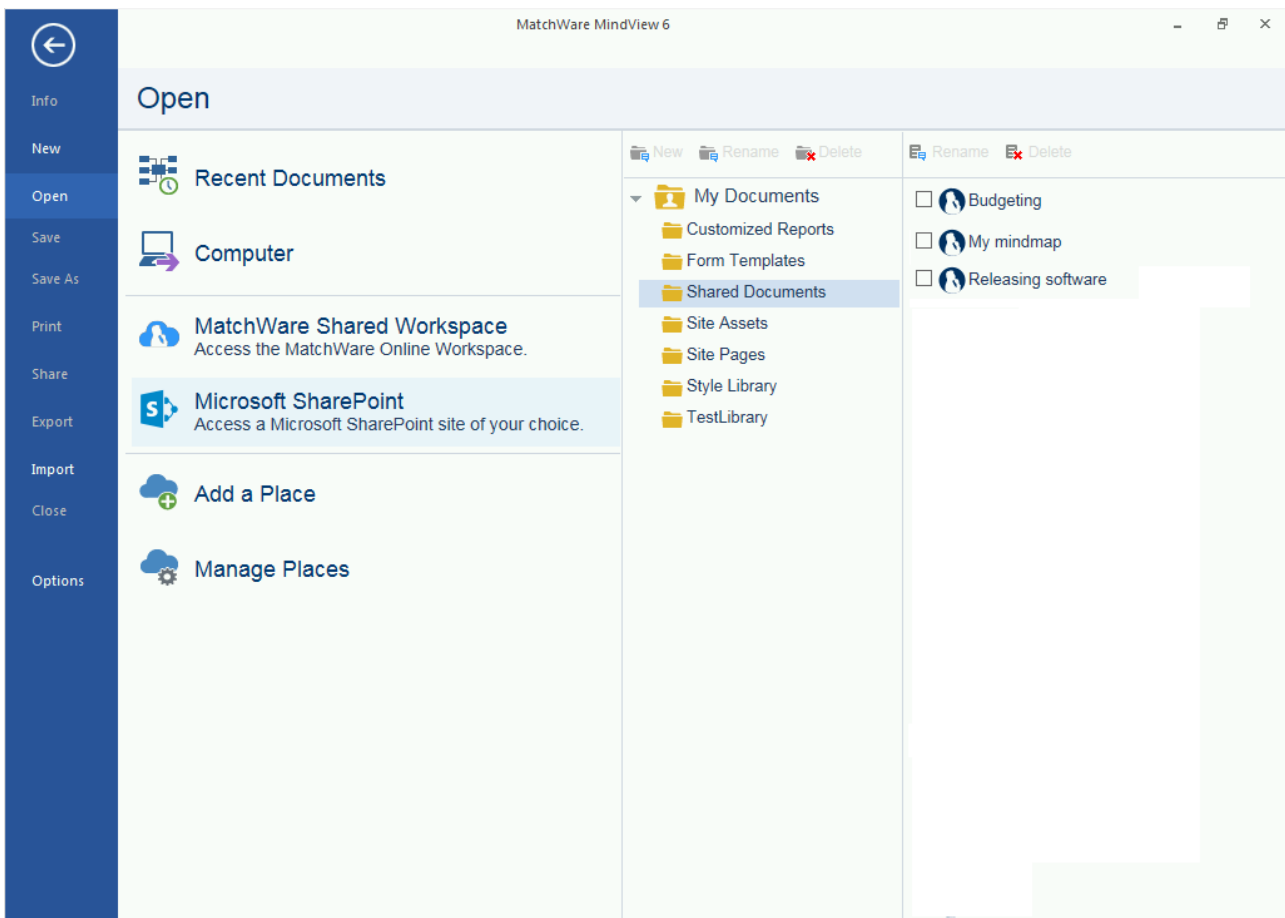


Figure 2 - Open the newly created Microsoft SharePoint site by clicking the new connection "Microsoft SharePoint" connection. Only MindView documents with the extension .mvdX will be shown as files here.

Saving a MindView document to Microsoft SharePoint site

Open up a MindView document or create a new document in MindView and select the "Microsoft SharePoint" connection from the Save list. Now you should be able to browse the SharePoint site and navigate to the right folder where you want to save the file.

When you save a document that is opened from a SharePoint site the document is automatically transferred back to the SharePoint site when saving.

MatchWare Inc.
605 W. Azeele Street
Tampa, FL 33606-2205
USA

T: 1-800-880-2810
F: 1-800-880-2910
usa@matchware.com

MatchWare Ltd
9-11 The Quadrant
Richmond, TW9 1BP
United Kingdom

T: +44 (0)20 8940 9700
F: +44 (0)20 8332 2170
london@matchware.com

MatchWare Germany
Telemannstr. 21
20255 Hamburg
Deutschland

T: +49 (0) 40 543764
F: +49 (0) 40 543789
hamburg@matchware.com

MatchWare A/S
P. Hior-Lorenzens vej 2A
Århus C
Denmark

T: +45 87 303500
F: +45 87 303501
aarhus@matchware.com

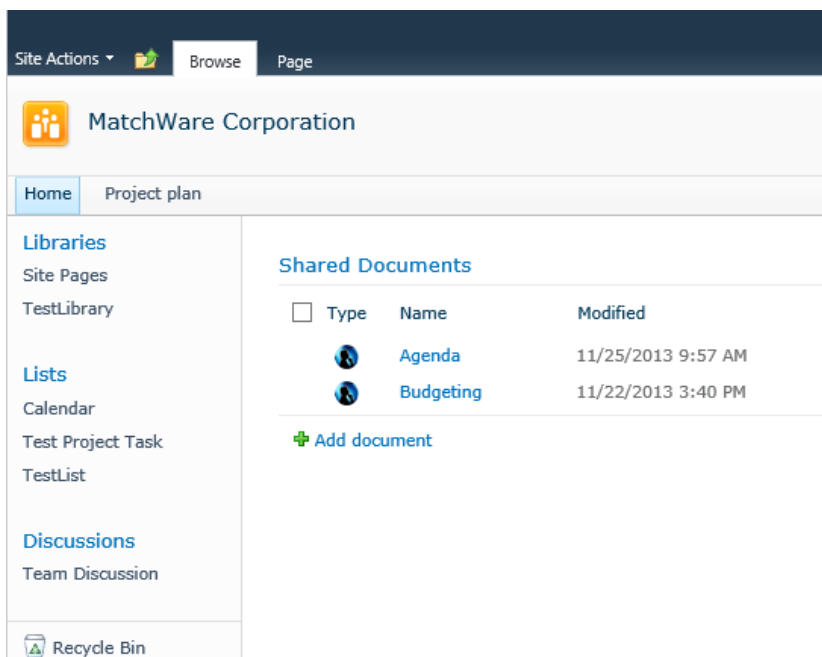


Figure 3 - The MindView document are located in the SharePoint documents folder where the files were saved from MindView.

Tips and tricks

- If you have a Microsoft SharePoint site which is setup to the same domain as you are logged into Windows it is possible to leave the Username and Password empty when setting up the SharePoint connection as then the Windows login details is used when logging into the SharePoint site.
- It is possible to setup a full path to a directory located in SharePoint. Example: Setup a connection directly to your Shared Documents: URL: <https://MySharePointSite.com/Shared Documents>

MatchWare Inc.
605 W. Azeele Street
Tampa, FL 33606-2205
USA

T: 1-800-880-2810
F: 1-800-880-2910
usa@matchware.com

MatchWare Ltd
9-11 The Quadrant
Richmond, TW9 1BP
United Kingdom

T: +44 (0)20 8940 9700
F: +44 (0)20 8332 2170
london@matchware.com

MatchWare Germany
Telemannstr. 21
20255 Hamburg
Deutschland

T: +49 (0) 40 543764
F: +49 (0) 40 543789
hamburg@matchware.com

MatchWare A/S
P. Hior-Lorenzens vej 2A
Århus C
Denmark

T: +45 87 303500
F: +45 87 303501
aarhus@matchware.com